

# Product data sheet

# TS 1500 G with hold-open



Overhead door closer with guide rail for up to 750 mm leaf width with mechanical hold-open device

## AREAS OF APPLICATION

- Right and left single-action doors
- Single-action doors up to 750 mm leaf width
- Door leaf installation hinge side and transom installation opposite hinge side

# TS 1500 G with hold-open



## PRODUKTBESCHREIBUNG EN

The overhead door closer TS 1500 G with guide rail is suitable for 1-leaf internal doors up to 750 mm leaf width (fixed closing force EN size 1).

### PRODUCT FEATURES

- Fixed closing force of EN1
- Can be used for right and left hand doors without conversion
- Mechanical hold-open unit in the guide rail with hold-open area 80°-130°
- Hydraulic latching action which accelerates the door shortly before it is closed
- Closing speed can be individually adjusted
- All functions can be adjusted from the front

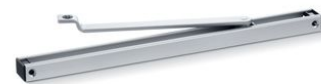
## TECHNICAL DATA

Productname	TS 1500 G with hold-open
Leaf width (max.)	750 mm
Type of installation	Door leaf installation hinge side, Transom installation opposite hinge side
Adjustable closing speed	Yes
Latching action adjustable	Yes, via valve
Back check integrated	No
Position of closing force adjustment	At the side
Hold-open function	Mechanical
Smoke switch integrated	No

## PART

### GUIDE RAIL TS 1500 G/F \*

with mechanical hold-open device and lever



# TS 1500 G with hold-open



Designation	Description	Ident-No.	Colour	Dimensions	Hold-open point min.
Guide rail TS 1500 G/F	with mechanical hold-open device and lever	101889	silver-coloured	390 x 30.5 x 20.5 mm	80 °
Guide rail TS 1500 G/F	with mechanical hold-open device and lever	101892	according to RAL	390 x 30.5 x 20.5 mm	80 °
Guide rail TS 1500 G/F	with mechanical hold-open device and lever	101891	white RAL 9016	390 x 30.5 x 20.5 mm	80 °

## CLOSER BODY TS 1500 G \*

Main body for overhead door closer with guide rail EN 1



Designation	Description	Ident-No.	Colour	Closing force in accordance with EN 1154	Dimensions
GEZE TS 1500 G closer *	Size EN 1 (without guide rail and lever)	N/A	silver-coloured	EN 1	177 x 39 x 50 mm
GEZE TS 1500 G closer *	Size EN 1 (without guide rail and lever)	N/A	white RAL 9016	EN 1	177 x 39 x 50 mm
GEZE TS 1500 G closer *	Size EN 1 (without guide rail and lever)	N/A	according to RAL	EN 1	177 x 39 x 50 mm
GEZE TS 1500 G closer *	Size EN 1 (without guide rail and lever)	N/A	dark bronze	EN 1	177 x 39 x 50 mm

## ACCESSORIES

### COVER CAP DOOR CLOSER

For TS 1500, can only be used for door leaf installation



Designation	Description	Ident-No.	Colour	Dimensions
Cover cap door closer	For TS 1500, can only be used for door leaf installation	080147	silver-coloured	188 x 47 x 57.5 mm
Cover cap door closer	For TS 1500, can only be used for door leaf installation	080149	white RAL 9016	188 x 47 x 57.5 mm
Cover cap door closer *	For TS 1500, can only be used for door leaf installation	080148	dark bronze	188 x 47 x 57.5 mm

# TS 1500 G with hold-open



## FLEXIBLE OPENING RESTRICTOR

for riveted guide rail, standard guide rail BG, standard guide rail and Boxer 20.7 mm guide rail



Designation	Description	Ident-No.
Flexible opening restrictor	for riveted guide rail, standard guide rail BG, standard guide rail and Boxer 20.7 mm guide rail	069780

## INSTALLATION MATERIAL

### MOUNTING PLATE GUIDE RAIL \*

For TS 1500 G



Designation	Description	Ident-No.	Colour
Mounting plate guide rail	For TS 1500 G	072355	according to RAL
Mounting plate guide rail	For TS 1500 G	072333	silver-coloured

### MOUNTING PLATE DOOR CLOSER

for TS 1500



Designation	Description	Ident-No.	Colour
Mounting plate door closer	for TS 1500	029683	dark bronze
Mounting plate door closer	for TS 1500	029682	silver-coloured
Mounting plate door closer	for TS 1500	029685	white RAL 9016
Mounting plate door closer	for TS 1500	029686	according to RAL

## TS 1500 G with hold-open



---

\* The products designated above may vary in form, type, characteristics, function, or availability depending on the country. Please get in touch with your GEZE contact person if you have any questions.